

Delta Measurement Experimentation Consortium

February 1, 2018

2:30 p.m. – 4:30 p.m.



Welcome!

If you are joining via Skype, we will begin in a few minutes.

Conference Phone Number: (916) 562-0861

Access Code: 93982597#



Welcome and Introductions

- Michael George, Delta Watermaster

Office of the Delta Watermaster Staff

- John Collins, Senior Environmental Scientist
- Ruey-Wen Wang, Water Resource Control Engineer
- Kristi Matal, Communication and Outreach Specialist

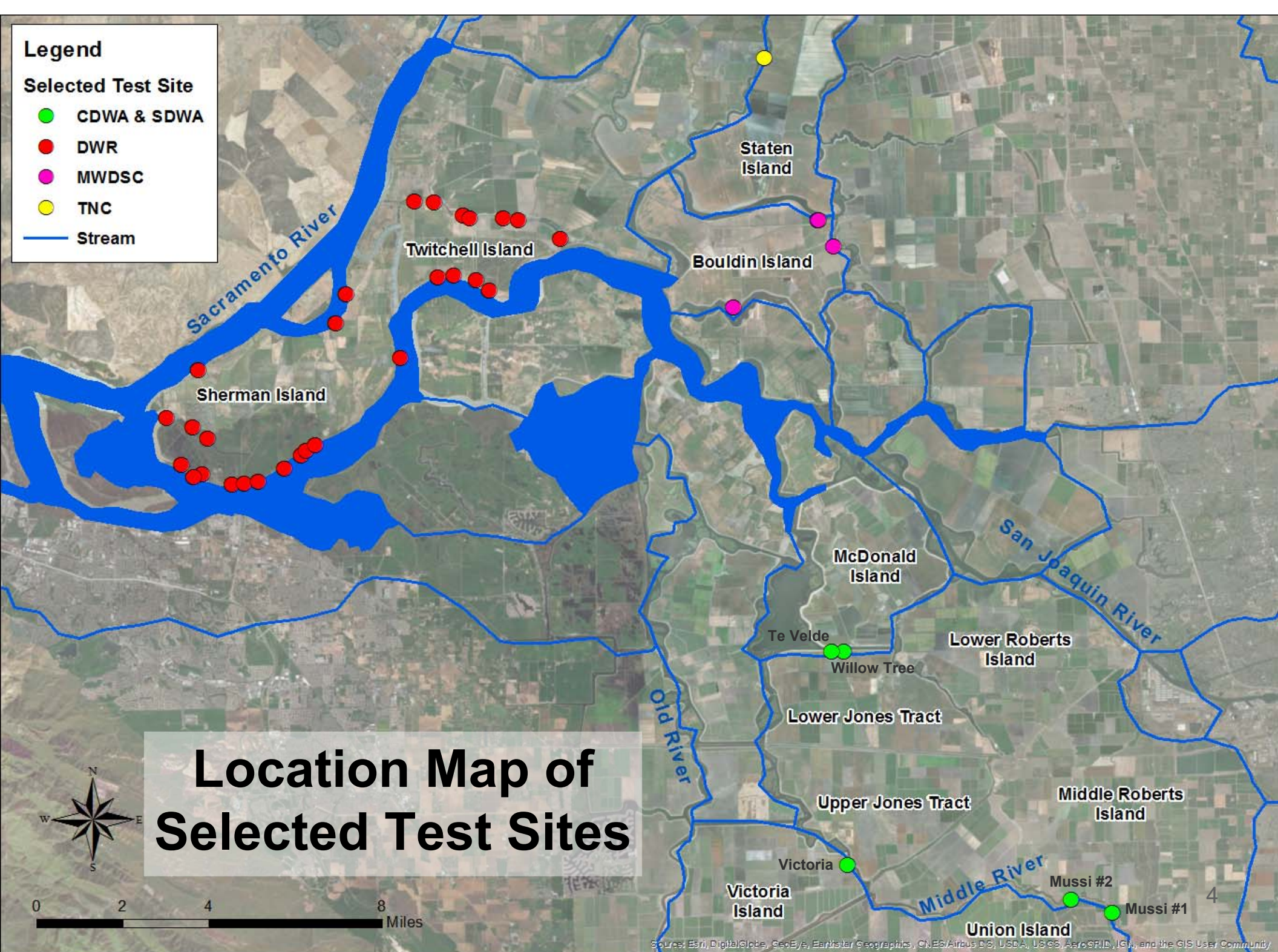
Deadlines, Accuracy and Frequency for Monitoring

Type of Diversion (af = acre-ft.)	Installation Deadline	Required Accuracy (Device Installed On/Before 1/1/2016)	Required Accuracy (Device Installed After 1/1/2016)	Required Monitoring Frequency	Qualifications for Installation and Certification
Direct Diversion ≥1,000 af/year or Storage ≥1,000 af	January 1, 2017	15%	10%	Hourly	Engineer, Contractor, Professional
Direct Diversion ≥100 af/year or Storage ≥200 af	July 1, 2017	15%	10%	Daily	Engineer, Contractor, Professional
Storage ≥100 af	July 1, 2017	15%	15%	Weekly	Engineer, Contractor, Professional
Direct Diversion >10 af/year or Storage ≥50 af	January 1, 2018	15%	15%	Weekly	Individual experienced with measurement & monitoring
Storage >10 af	January 1, 2018	15%	15%	Monthly	Individual experienced with measurement & monitoring

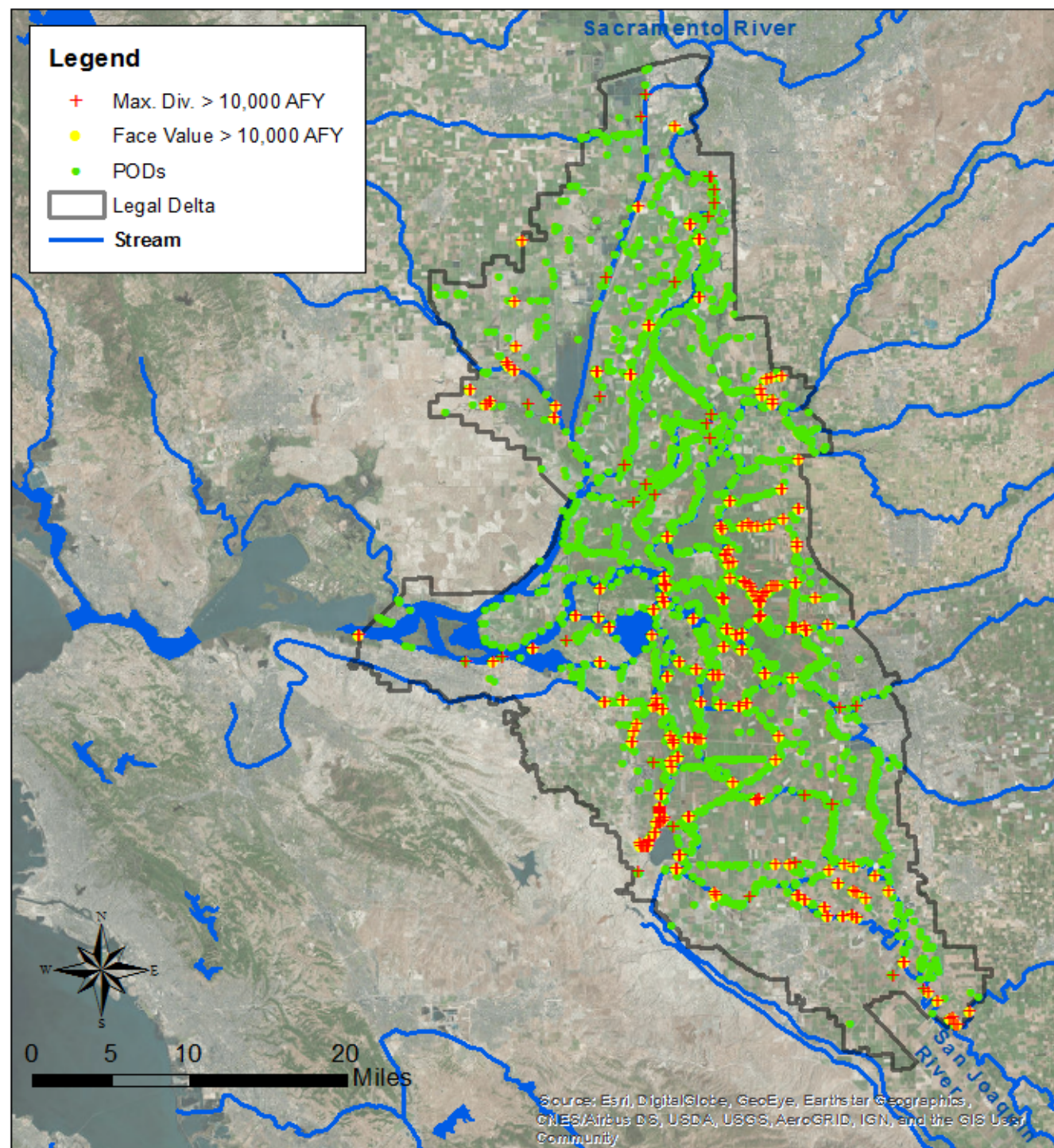
Legend

Selected Test Site

- CDWA & SDWA
- DWR
- MWDSC
- TNC
- Stream



Source: Esri, DigitalGlobe, GeoEye, Earthstar Geographics, CNES/Airbus DS, USDA, USGS, AeroGRID, IGN, and the GIS User Community



Points of Diversion and Largest Diverters in the Legal Delta (Draft. 1/31/2018)

Thank You

Michael George

Delta Water Master

Email: michael.george@waterboards.ca.gov

Office Phone: (916) 445-5962

Kristi Matal

Communication and Outreach Specialist

Email: kristi.matal@waterboards.ca.gov

Office Phone: (916) 319-8264